



DESCRIPTION

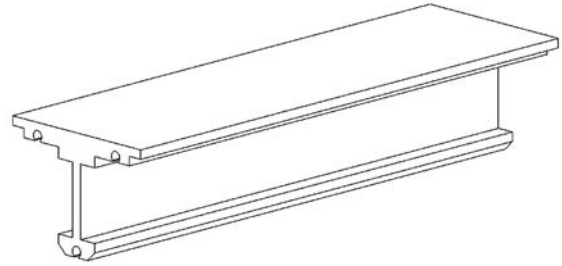
The Jands JT extruded aluminium curtain track is ideal for use in theatres, cinemas and other permanent installations. Unlike steel truss style tracks, the Jands JT extruded track is easily curved and does not require welding. The track is coated with a black anodised finish to enhance its durability and appearance.

OVERALL SPECIFICATIONS

Material	:	Aluminium
Finish	:	Black anodised
Standard length	:	6.5m
Weight	:	0.948 kg/m (6.16 kg per 6.5m standard length)

FEATURES

- Designed for medium duty applications
- Aluminium extruded section
- Black anodised matt finish
- Installation via screw fixing to an appropriate surface
- Can be custom curved
- Wide range of accessories available (see below)
- Brackets available for direct fixing to truss, structural members or for hanging
- Fixing at 1 metre centres



ORDERING INFORMATION

TRACK & FIXINGS

JT CURTAIN TRACK
(6.5m length)
Part number: **MP420L**

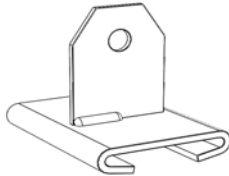


RUNNER
Part number: MP402
Part number: MP402-50 50 Pack

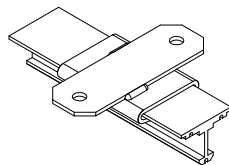


Nylon tyred, ball bearing wheels, black Nylon side plates that attach curtain to track.

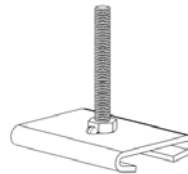
HANGING MOUNTING BRACKET
Part number: MP403A
Hole Dia. 9.5mm



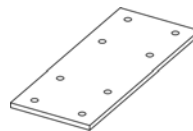
CEILING FIX MOUNTING BRACKET
Part number: MP403D



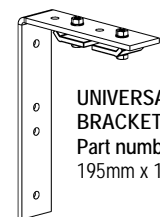
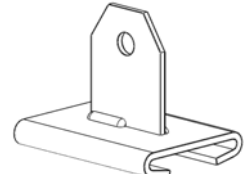
BOLTED HANGING MOUNTING BRACKET
Part number: MP403B
M8 x 65 stud



TRACK SPACER PLATES
Part number: MP478
Used to offset track for straight overlap - 2 per pack

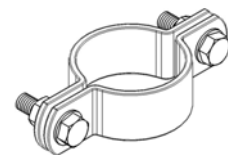


HANGING MOUNTING BRACKET
Part number: MP403C
Hole Dia. 9.5mm



UNIVERSAL MOUNTING BRACKET
Part number: MP470
195mm x 145mm x 6mm

BARREL CLAMP
Part number: MP459
To suit 40NB (48.3mm OD) Tube

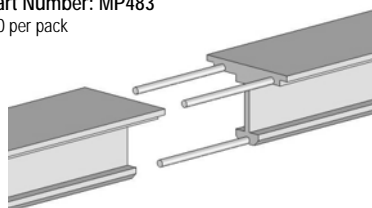


90° TRACK BEND 0.6m radius
Part number: MP420-6

90° TRACK BEND 0.8m radius
Part number: MP420-8

For hand paged cordless operation only
Includes 6 x Track Joining Pins

TRACK JOINING PINS
Part Number: MP483
10 per pack





ARCHITECT & ENGINEER'S SPECIFICATION

The tracking system shall consist of an extruded aluminium section, anodised matt black, available in continuous lengths up to 6.5m.

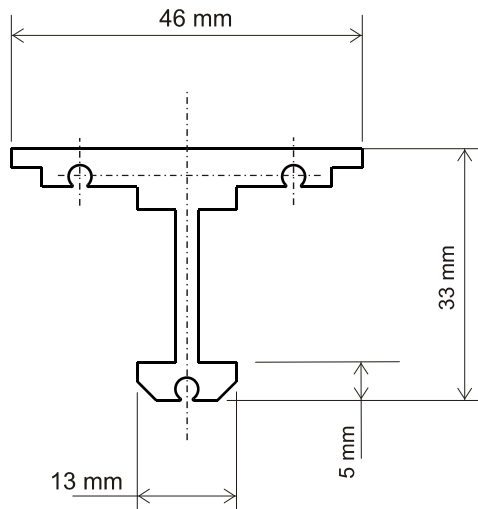
The tracking system shall be designed for screw fixing to a top plate and shall be able to be readily curved to suit custom applications.

A system of accessories to suit the track shall be available including runners, end pulleys, cranked and straight leaders, mounting brackets, etc.

The runners will feature black nylon tyres with ball bearing wheels, silent in operation.

The tracking system shall be available with either a hand drawn cord closing system or a motorised winch unit closing system.

The tracking system and accessories shall be the Jands JT professional tracking system and accessories.

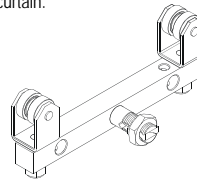


ORDERING INFORMATION

CORD OPERATED AND MOTORISED TRACK SYSTEMS

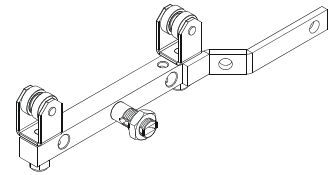
STRAIGHT LEADER

Part number: MP410
For overlapping track applications. Attaches to leading edge of curtain.



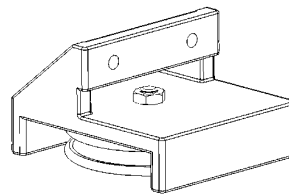
CRANKED LEADER

Part number: MP410A
For single track application. Attaches to leading edge of curtain.



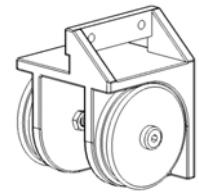
SINGLE END PULLEY

Part number: MP413
For rope/wire return to double end pulley (nylon wheels and black aluminium casting).



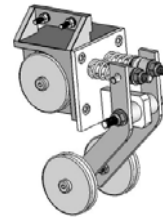
DOUBLE END PULLEY

Part number: MP412
For rope/wire return to floor. (nylon wheels and black aluminium casting).



SPRING LOADED DOUBLE END PULLEY

Part number: MP412A
Pulley for tensioning steel wire rope on motorised systems.



SPRING LOADED FLOOR BLOCK

Part number: MP451A
To tension cord draw systems.



MOTORISED DRUM WINCH

Part Number JND-H100D-S / H100D-SE (with encoder option)
Complete with limit switches (requires JND-HC01V Curtain Controller)

